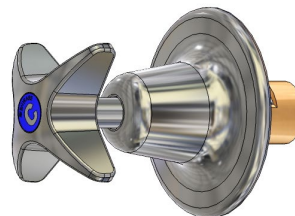


# School Pattern Recess Adaptor - Ceramic Disc

Enware's vandal resistant School Pattern tapware is constructed from dezincification resistant (DR) brass with durable chrome plating and an easy to clean design. The handle features a vandal resistant internal locking ring securing it to the spindle and requires a special key to remove.

## KEY FEATURES

- Half-Turn Ceramic Disc
- Vandal resistant school pattern handle
- Clear identification on the handle with Blue (Cold), Red (Hot) or Yellow (Warm) coloured indicator button. (3 colour indicator buttons included)
- Serviceable with all wearing components replaceable, thus providing an even longer life
- Durable bright chrome finish
- Constructed from lead free brass



## PRODUCT CODE

VPQ308

School Pattern Recess Adaptor - Ceramic Disc



Products are to be installed in accordance with the Plumbing Code of Australia and AS/NZS3500. Reference should also be made to the Australasian Health Facility Guidelines (AHFG), ABCB and Local Government regulations when considering the choice of, and the installation of these products.

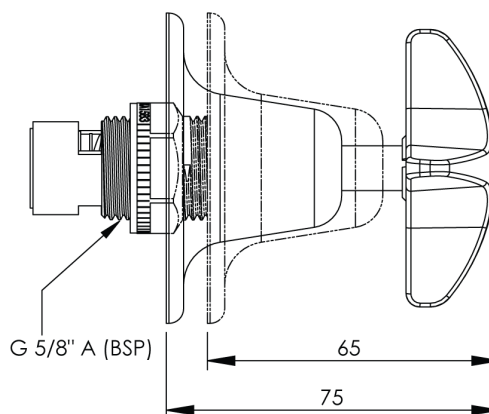
This product is compliant with the Lead Free requirements of NCC Volume Three.

Due to ongoing Research and Development, specifications may change without notice. Component specifications may change on some export models.

Refer to warranty statement for warranty details - [www.enware.com.au/warranty](http://www.enware.com.au/warranty).

## TECHNICAL DATA

|  |                       |
|--|-----------------------|
| Recommended Pressure                       | 50kPa – 500kPa        |
| Maximum Static Pressure                    | 800kPa                |
| Maximum Recommended Temperature            | 70°C                  |
| Maximum Ceramic Disk Operating Temperature | 85°C                  |
| Finish                                     | Chrome                |
| Valve Type                                 | 1/2 Turn Ceramic Disc |



# School Pattern Recess Adaptor - Ceramic Disc

## OPTIONAL ACCESSORIES

|        |   |
|--------|---|
| VPQ383 | School Pattern Stuffing Box Assembly -<br>Recess - 1/4 Turn Ceramic Disc - 15mm<br>Extended |
|--------|---|

## SPARE PARTS

|           |   |
|-----------|---|
| VPQ382    | School Pattern - Stuffing Box Assembly -<br>Recess - 1/2 Turn Ceramic Disc Standard |
| VP378     | School Pattern - Handle   |
| MIS590    | Vandal Proof Key Only   |
| MIS595RYB | Spare Parts: Indicator Button Kit - Hot / Cold<br>/ Warm - Stick On                 |