

School Pattern Pillar Tap - Aerated Outlet - 1/2 Turn Ceramic Disc

Enware's vandal resistant School Pattern tapware is constructed from dezincification resistant (DR) brass with durable chrome plating and an easy to clean design. The handle features a vandal resistant internal locking ring securing it to the spindle and requires a special key to remove.

KEY FEATURES

- 1/2 Turn Ceramic Disc
- Fits square or round tap hole
- Vandal resistant school pattern handle
- Blue (Cold), Yellow (Warm) and Red (Hot) indicator buttons supplied standard
- Serviceable with all wearing components replaceable, thus providing an even longer life
- Constructed from lead free brass
- Durable bright chrome finish
- WELS - 3 Star (8Lpm) / 5 Star (6Lpm)



PRODUCT CODE

VPQ327

School Pattern Pillar Tap - Aerated Outlet -
1/2 Turn Ceramic Disc



Products are to be installed in accordance with the Plumbing Code of Australia and AS/NZS3500. Reference should also be made to the Australasian Health Facility Guidelines (AHFG), ABCB and Local Government regulations when considering the choice of, and the installation of these products.

This product is compliant with the Lead Free requirements of NCC Volume Three.

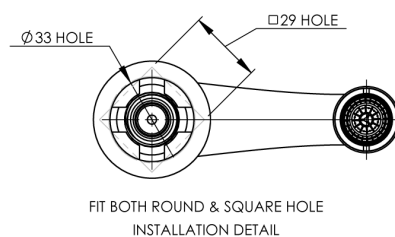
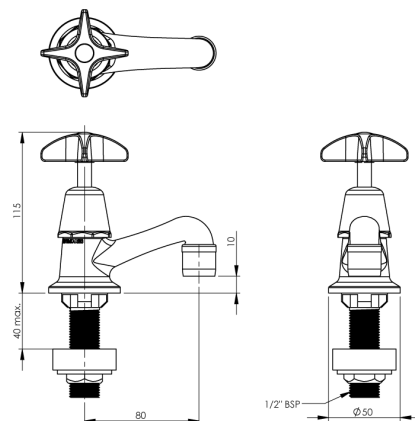
Due to ongoing Research and Development, specifications may change without notice. Component specifications may change on some export models.

Refer to warranty statement for warranty details - www.enware.com.au/warranty.

School Pattern Pillar Tap - Aerated Outlet - 1/2 Turn Ceramic Disc

TECHNICAL DATA

Inlet Connection	1/2" BSP (15mm) MI
Recommended Pressure	50kPa – 500kPa
Maximum Static Pressure	800kPa
Maximum Recommended Temperature	70°C
Maximum Ceramic Disk Operating Temperature	85°C
Flow Rate	8 L/min
Finish	Chrome
Valve Type	1/2 Turn Ceramic Disc



SPARE PARTS

VPQ390	School Pattern Bib/Pillar Top Assembly - 1/2 Turn Ceramic Disc
VP378	School Pattern - Handle
SP301	Aerator - M22x1 F/Male - No.1 - Standard
MIS590	Vandal Proof Key Only
MIS595RYB	Spare Parts: Indicator Button Kit - Hot / Cold / Warm - Stick On