

# Wellbeing Leva 150mm Pillar Tap

The Wellbeing Leva range combines outstanding quality with functional, beautiful design. Ideal for Hospital and Aged Care applications, providing the benefits of easier reach, control, and enhanced hygiene with fewer gaps that can trap dirt and bacteria. The 150mm lever allows hands-free elbow operation suitable for clinical handwash and scrub sink environments where hygiene is critical.

## KEY FEATURES

- Quarter-turn, contra-rotating 150mm lever handle
- Ceramic Disc
- Fixed spout
- WELS 5 Star (5 L/min) laminar flow aerator
- Clear identification on lever handle with blue, yellow or red coloured indicator collar
- Ergonomic sleek design 150mm lever handle ensures ease of use either by wrist or elbow
- Attractive chrome body
- Laminar flow aerator reducing the risk of airborne bacteria
- Lead Free Brass
- Robust construction for superior performance
- Designed and Engineered in Australia



## PRODUCT CODES

WLC150PLTC	Left-Turn / Anti-Clockwise to Close
WLC150PRTC	Right-Turn / Clockwise to Close



Products are to be installed in accordance with the Plumbing Code of Australia and AS/NZS3500. Reference should also be made to the Australasian Health Facility Guidelines (AHFG), ABCB and Local Government regulations when considering the choice of, and the installation of these products.

This product is compliant with the Lead Free requirements of NCC Volume Three.

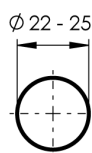
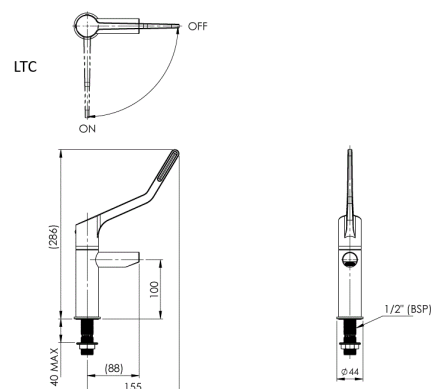
Due to ongoing Research and Development, specifications may change without notice. Component specifications may change on some export models.

Refer to warranty statement for warranty details - [www.enware.com.au/warranty](http://www.enware.com.au/warranty).

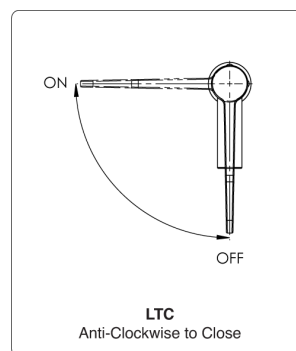
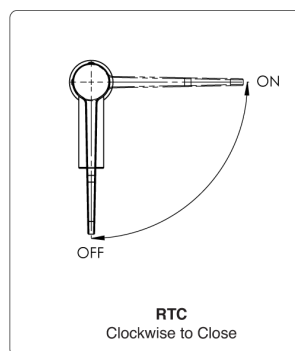
# Wellbeing Leva 150mm Pillar Tap

## TECHNICAL DATA

Inlet Connection	1/2" BSP (15mm)
Recommended Pressure	50kPa – 500kPa
Maximum Static Pressure	800kPa
Maximum Recommended Temperature	70°C
Maximum Ceramic Disc Working Temperature	85°C
Flow Rate	5.5 L/min
Valve Type	1/4 Turn Ceramic Disc
Finish	Chrome



INSTALLATION DETAIL  
(BENCH TOP CUT OUT)



## Water Flow Projection

