

Wellbeing Leva 80mm Recess Adaptor

WLC80WLTC
WLC80WRTC

The Leva range combines outstanding quality with functional, beautiful design and enhanced hygiene with fewer gaps that can trap dirt and bacteria. For easy palm and wrist activated tapware, the Leva 80 series delivers an extensive choice with greater control, particularly for arthritis sufferers. For accessible applications Leva also delivers the benefits of easier reach, operation and control.

KEY FEATURES

- Quarter-turn, contra-rotating 80mm lever handle
- Ceramic Disc
- Clear identification on lever handle with blue, yellow or red coloured indicator collar (3 colour indicator collars included)
- Ergonomic sleek design 80mm lever handle ensures ease of use either by palm or wrist
- Robust construction for superior performance
- Australian designed and manufactured
- Extended spindles available



PRODUCT CODES

WLC80WLTC	Wellbeing Leva 80mm Recess Adaptor - Anti-clockwise-to-Close
WLC80WRTC	Wellbeing Leva 80mm Recess Adaptor - Clockwise-to-Close

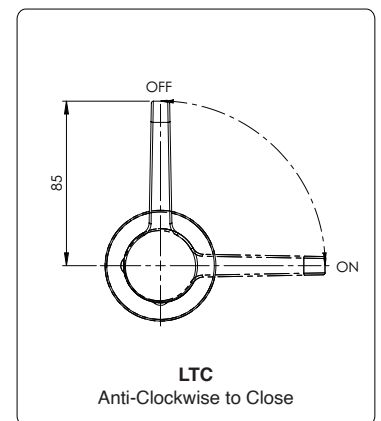
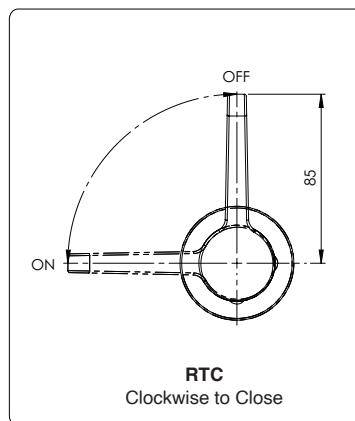
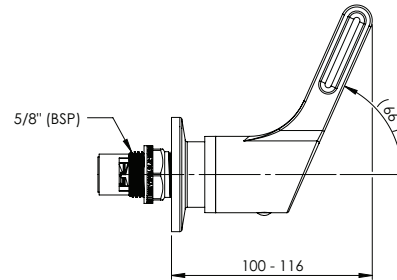
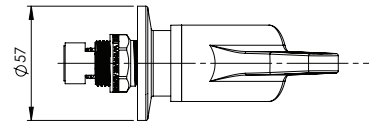


Version 1.0__01Sep22

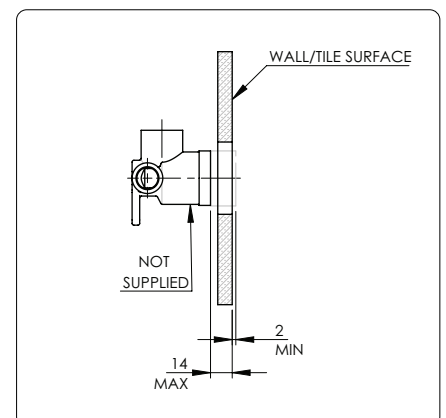
Wellbeing Leva 80mm Recess Adaptor

TECHNICAL INFORMATION

Working Pressure Range	Min 50 kPa Max 500 kPa
Maximum Static Pressure	800 kPa
Maximum Working Temperature	85°C (Ceramic disc)



Wall-Depth Adjustment



Enware products are to be installed in accordance with the Plumbing Code of Australia and AS/NZS3500. Reference should also be made to the Australasian Health facility Guidelines (AHFG), ABCB and Local Government regulations when considering the choice of, and the installation of these products.

Enware Australia advises:

1. Due to ongoing Research and Development, specifications may change without notice. 2. Component specifications may change on some export models. 3. Refer to warranty statement for warranty details - www.enware.com.au/warranty

Version 1.0__01Sep22