

# Wellbeing Leva 80mm Recess Adaptor

The Leva range combines outstanding quality with functional, beautiful design and enhanced hygiene with fewer gaps that can trap dirt and bacteria. For easy palm and wrist activated tapware, the Leva 80 series delivers an extensive choice with greater control, particularly for arthritis sufferers. For accessible applications Leva also delivers the benefits of easier reach, operation and control.

## KEY FEATURES

- Quarter-turn, contra-rotating 80mm lever handle
- Ceramic Disc
- Clear identification on lever handle with blue, yellow or red coloured indicator collar (3 colour indicator collars included)
- Ergonomic sleek design 80mm lever handle ensures ease of use either by palm or wrist
- Robust construction for superior performance
- Extended spindles available
- Designed and engineered in Australia



## PRODUCT CODES

WLC80WLTC	Left-Turn / Anti-Clockwise to Close
WLC80WRTC	Right-Turn / Clockwise to Close



Products are to be installed in accordance with the Plumbing Code of Australia and AS/NZS3500. Reference should also be made to the Australasian Health Facility Guidelines (AHFG), ABCB and Local Government regulations when considering the choice of, and the installation of these products.

This product is compliant with the Lead Free requirements of NCC Volume Three.

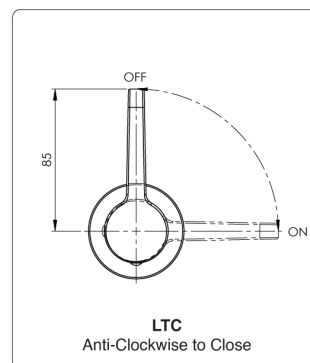
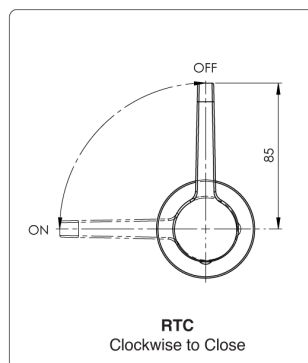
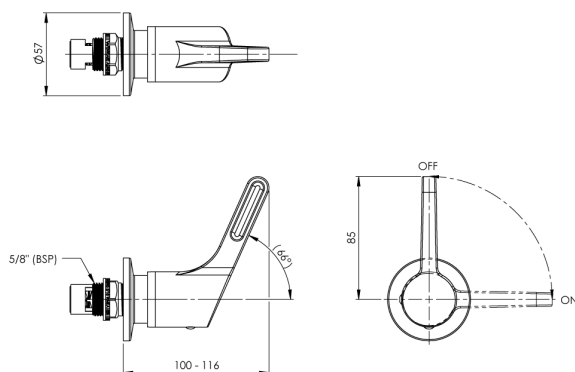
Due to ongoing Research and Development, specifications may change without notice. Component specifications may change on some export models.

Refer to warranty statement for warranty details - [www.enware.com.au/warranty](http://www.enware.com.au/warranty).

# Wellbeing Leva 80mm Recess Adaptor

## TECHNICAL DATA

Recommended Pressure	50kPa – 500kPa
Maximum Static Pressure	800kPa
Maximum Ceramic Disc Working Temperature	85°C
Valve Type	1/4 Turn Ceramic Disc
Finish	Chrome



## Wall-Depth Adjustment

