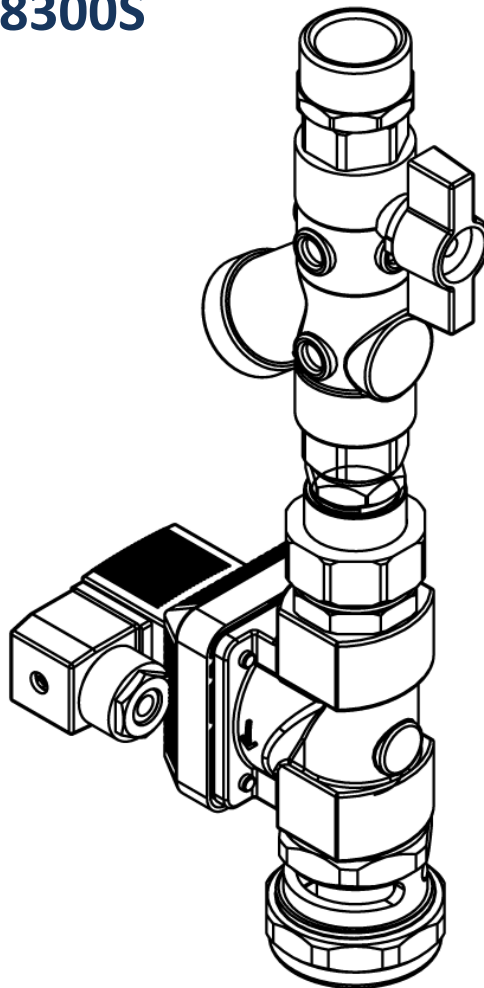


WC Flushing Valve For Water Management System

Installation & Maintenance Instructions

WMS8300 / WMS8300S



I00260_FEB 23

Call 1300 369 273

www.enware.com.au

Enware Australia Pty Limited

9 Endeavour Rd Caringbah NSW 2229 Australia

Ph: +61 2 8556 4000

ENWARE

TECHNICAL INFORMATION

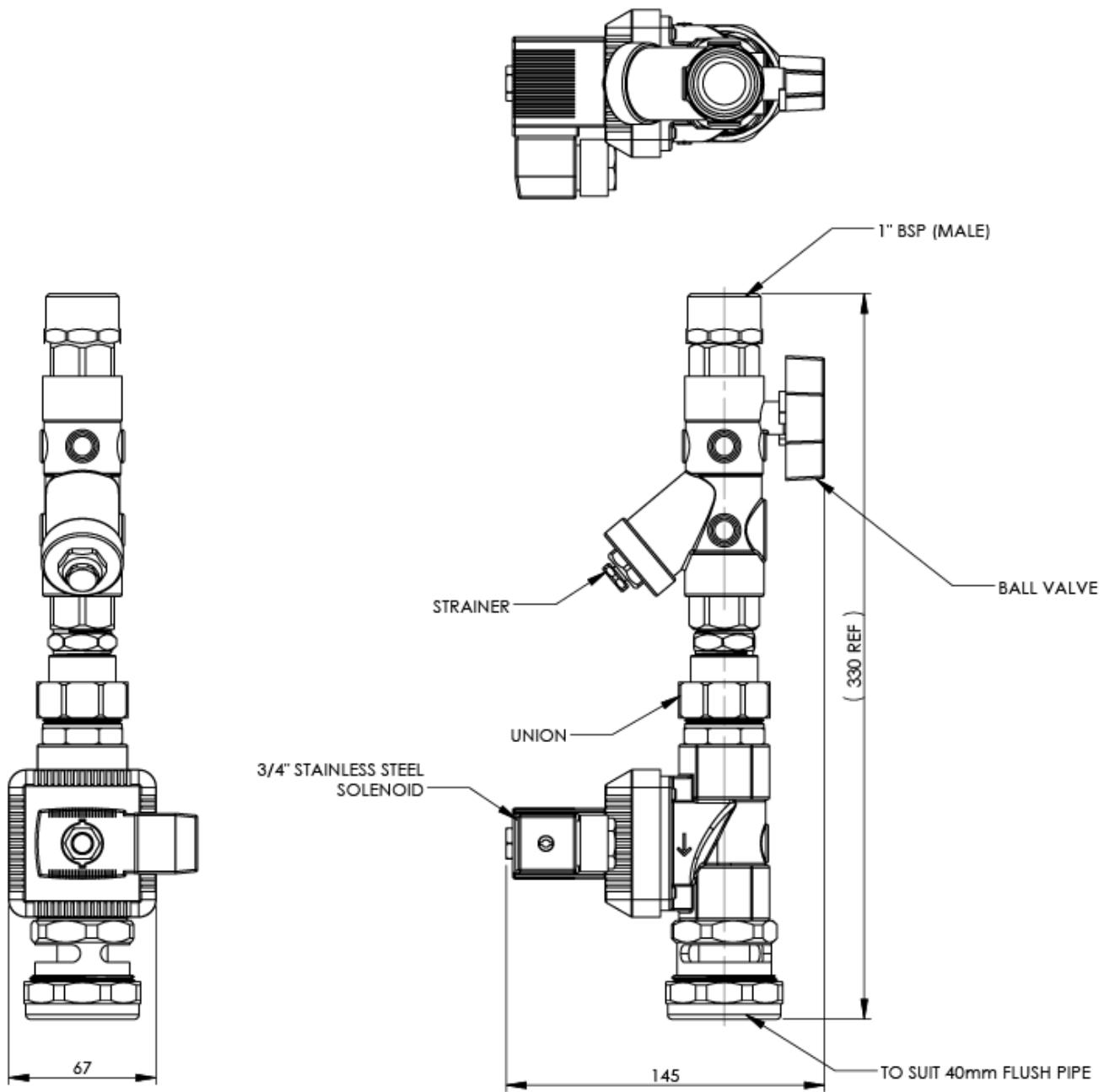
Water Supply	300 kPa Dynamic Pressure
Connection	Inlet - 1" BSP (25mm)
	Outlet - 1 ½" BSP (40mm)
Minimum Water Supply Line Size	1" (25mm) copper pipe
Operating Voltage	24V DC via Water Management System Control Hub
Kv Factor	8.3m ³ /h
Flush Pipe	1½" (40mm) flush pipe is required below the air break. (Note: use a maximum of 1 x 90° bend in flush pipe. If an offset is required 2 x 45° bends must be used. Maximum of 1 offset per flush pipe. Air break must be installed in a vertical position at 700mm +/- 100 mm above the pan inlet.
Flush Volume	Adjustable via Water Management System Control Hub Default Setting 1.4 sec Half Flush, 2.2 sec Full Flush

Enware products must be installed in accordance with the provisions of AS/NZS3500 and any relevant local regulations. In particular this product must be installed in accordance with AS/NZS 3500.2. Installations not complying with AS/NZS3500 may void the product and performance warranty provisions.

As Enware's product development is ongoing, product specifications may vary over time.

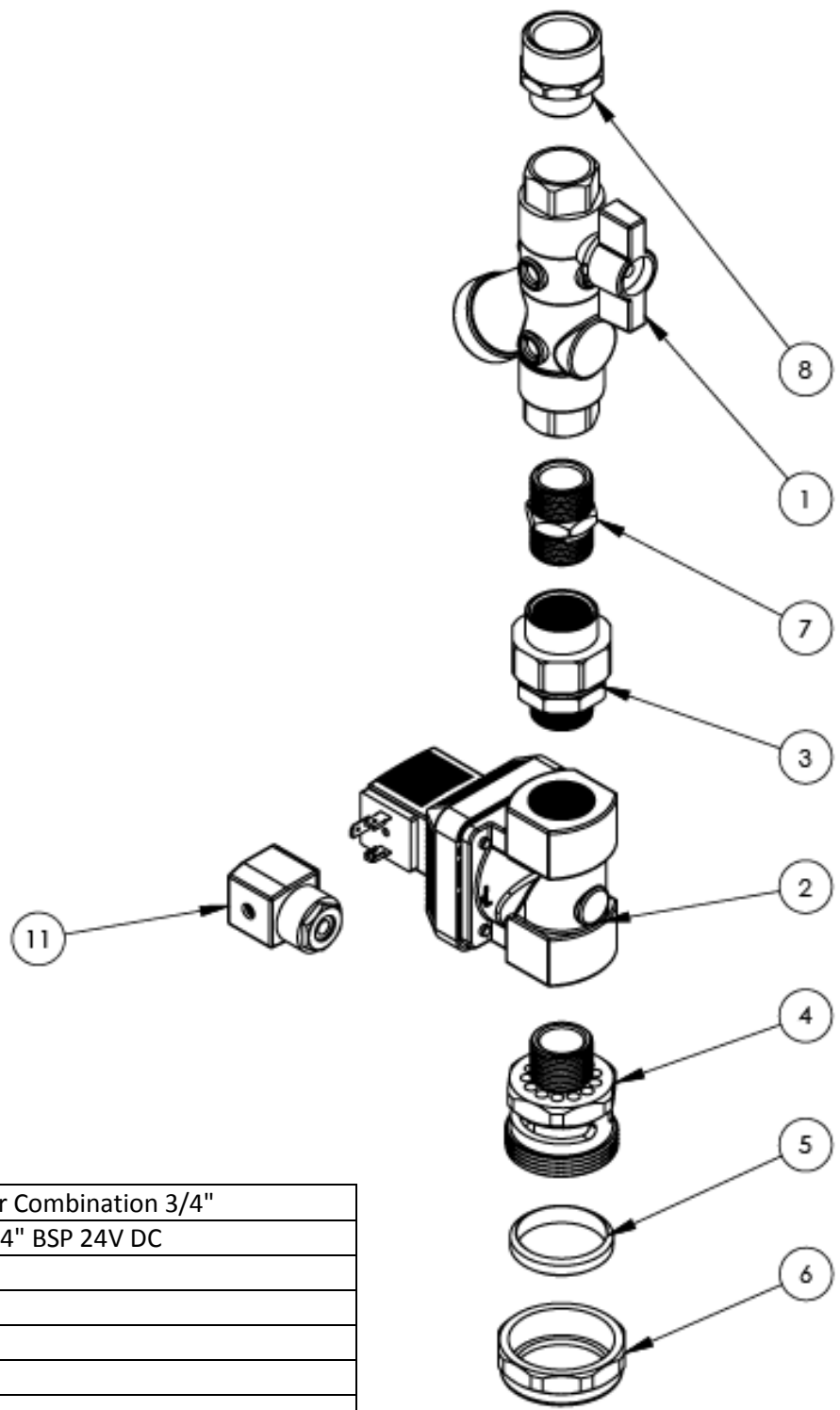
For use with potable water only.

DIMENSIONS



[Drawing not to scale]

COMPONENTS



1	Ball Valve Y-Strainer Combination 3/4"
2	Solenoid 316 S/S 3/4" BSP 24V DC
3	Union 3/4" M/F
4	Airbreak
5	Rubber olive seal
6	Trap nut 1-1/2"
7	Hex Nipple 3/4"
8	Reducing Nipple 1" x 3/4"
11	Gland Pack to suit Solenoid

TECHNICAL REQUIREMENTS

Before proceeding with installation, ensure all operating & dimensional specifications are suitable for the intended installation.

IMPORTANT TECHNICAL REQUIREMENTS

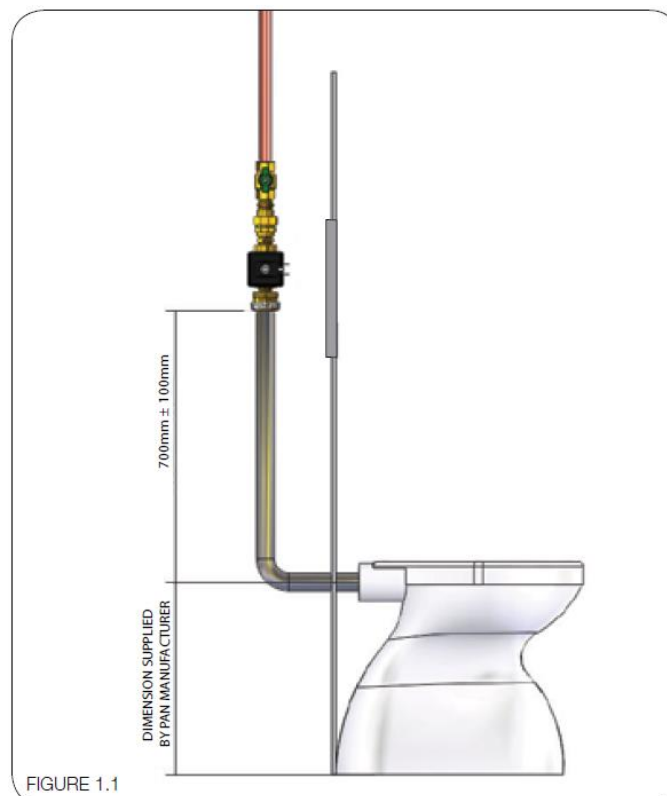
To ensure that the unit works correctly, it is important to ensure that the site and location of installation meets the hydraulic requirements of AS/NZS 3500.1.

In addition, there must be:

- Minimum 25mm copper supply line
- Minimum 200kPa for valve to operate.
NOTE: WELS Volume is only achieved at 300kPa
- 40mm flush pipe must be used (PVC adaptors to be supplied by the client if required)
(See FIGURE 1.1)
- Maximum of 1 x 90° bend in flush pipe may be used
(any other bends are required to be 45° - maximum of 2)
- Air break must be installed in a vertical position.

Pipe work to the valve fixture must be sized according to water service rule calculations and simultaneous demand requirements.

To ensure that the pipeline reticulation system for the valve is designed correctly for the satisfactory performance of the valve, a Hydraulic services Consultant and/or Engineer (or other personnel appropriately qualified in hydraulic services design) must be engaged.

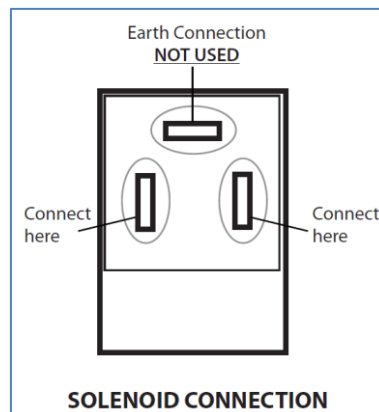


INSTALLATION PROCEDURE

1. Separate all parts from packaging and make sure all parts are accounted for before discarding any packaging material.
2. Flush water supply line thoroughly before installing the flush valve. Do not allow dirt, thread sealant or metal particles to enter the flush valve.
3. Fit the flush valve in the required position (take note of installation guidelines in Technical Requirements). If using PVC flush pipe, a 40mm cap and lining must be fitted to the air break. (Cap and lining not supplied)
4. Run conduit from solenoid to Water Management System Hub, and feed the solenoid cable through.

WARNING:
Do not cut the wires or extend existing cables without using the correct cable extension from Enware.
Cutting cables will void warranty.

5. Turn water supply on and check for leaks. (note Ball Valve still in off position.)
6. Turn inlet Ball Valve on and check for leaks.
7. Connect cables to solenoid. Use the gland pack, to connect to two pins on the sides, leaving the top pin for earth connection.



8. Activate the flush valve via Water Management System Hub and test operation.

WMS8000S – Flush Timing Control Details

The Flush Times for the WMS8000S are controlled by programming the settings in the WMS4000H Control HUB which once programmed can only be changed by Authorised access to the WMS Software.

WMS4000H Control HUB

Available Settings

WC

- Enable / Disable
- Run Time (Half Flush)
- Run Time (Full Flush)
- Lockout Time
- Maximum Daily Uses

1.4s and 2.2s for half/full flush

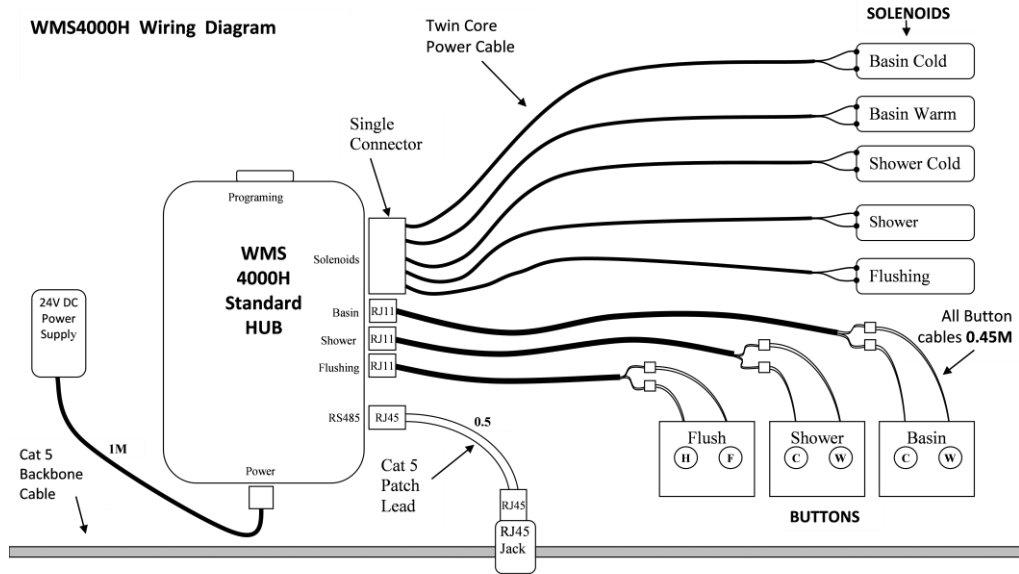
Flush Time accuracy: 0.1 sec

Flush time increment: 0.1 sec

Operation

Once programmed and installed the WMS HUB can operate as an independent Device. The operation and control of all fixtures will be determined by the program installed into the WMS HUB. The WMS HUB will stay true to the program installed up until the time that a new program is installed or the existing settings are modified. This can be achieved via the WMS Software operating on the WMS Server via the main Backbone Network Cable, or by a standalone laptop connected directly to the WMS Hub.





To Program Flush Time Settings:

SMART FLOW WMS SOFTWARE – Short Form Instructions

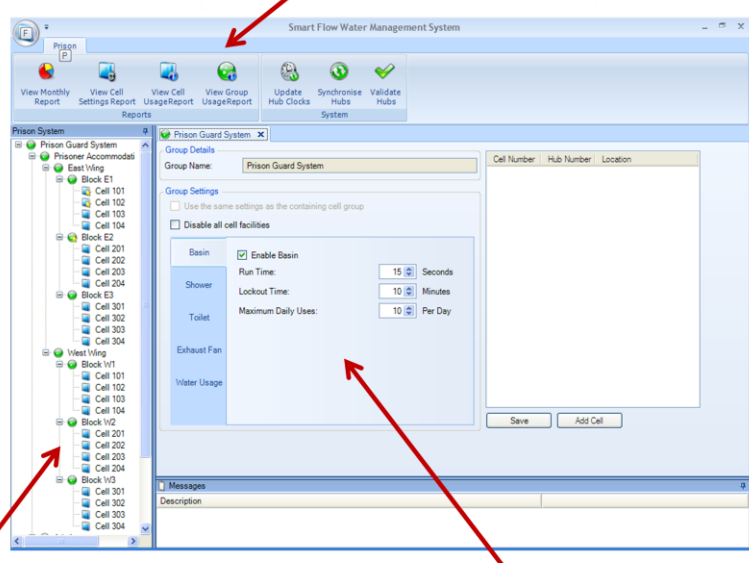


← CLICK ON ICON ON DESKTOP TO START

User Name: Administrator

Password: xxxxxx

Reports and System Config Ribbon



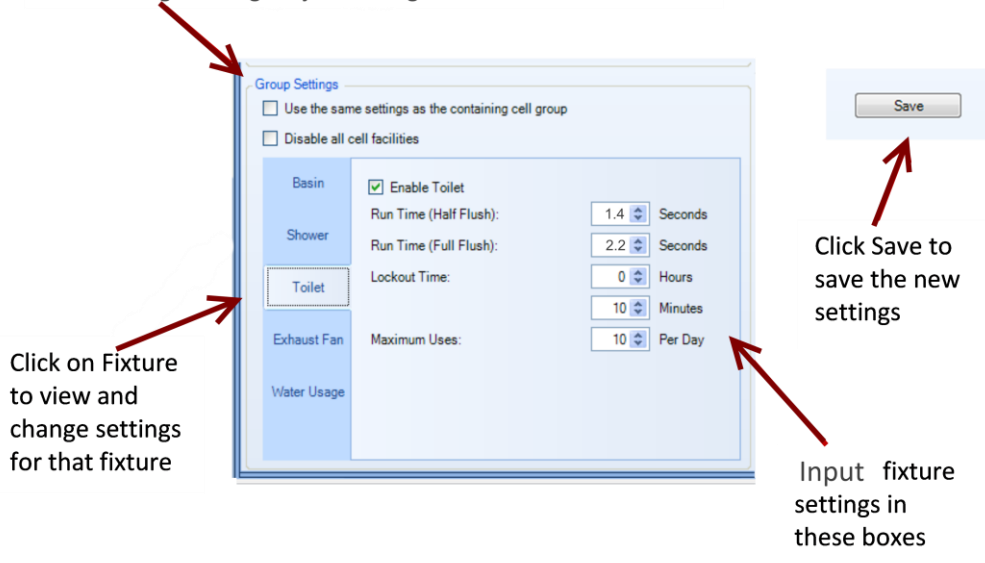
Double Click in tree to view current settings for Cell or Building

Cell or Building Settings window

Programming Settings

All settings are programmed by double clicking on a Cell or Building in the Tree.

To change settings adjust settings in this box



Click on Fixture to view and change settings for that fixture

Click Save to save the new settings

Input fixture settings in these boxes

Once programmed, the settings will remain constant until an authorised person programs a change.

SERVICE & MAINTENANCE

TROUBLESHOOTING

Refer to the following trouble shooting chart for specific problems and solutions.

PROBLEM	CAUSE	RECTIFICATION
Button pressed - water does not flow	Loose connection on leads	Reconnect electrical connections
	Piezo switch is not working	Piezo switch or transformer faulty
	Dirty Filter	Refer to 3.1 Filter Cleaning on page 6.
	Supply pressure issue	Ensure pressure delivered to unit is above 200kpa and below 500kPa (dynamic)
Water does not stop flowing	Debris or scale in the solenoid	Remove solenoid, pull out plunger and spring & clean them. Use scale remover if required. When replacing plunger, ensure spring is in vertical position
	Dirty Filter	Refer to 3.1 Filter Cleaning on page 6.
	Supply pressure issue	Ensure pressure delivered to unit is above 200kPa and below 500kPa (dynamic)
Flush pattern not fully covering bowl	Supply pressure issue	Ensure pressure delivered to unit is above 200kpa and below 500kPa (dynamic)
	Supply pipe inadequate size	Ensure supply is 25mm (minimum)
	Pan water requirements not met by flushing mechanism	Refer to pan manufacturers instructions. If pan is 6/3L style, look at supply pressure issues. Otherwise replace pans with 6/3L style
Too little water delivered	Supply pressure issue	Ensure pressure delivered to unit is above 200kpa and below 500kPa (dynamic)
	Supply pipe inadequate size	Ensure supply is 25mm (minimum)
	Pan water requirements not met by flushing mechanism	Refer to pan manufacturers instructions. If pan is 6/3L style, look at supply pressure issues. Otherwise replace pans with 6/3L style

For further assistance and after sales service, contact the Technical Customer Service Team at Enware, on 1300 369 273.

REGULAR MAINTENANCE

For long periods of non-use, a minimum activation of 1-2 times per day is recommended. High frequency of use and high water supply pressures reduce the service life of a solenoid.

If the solenoid is not working correctly or leaking, dismantle and service the solenoid. (For instructions, refer to separate document "100228_Solenoid 24v Servicing Instructions" available from Enware.) The most common cause of solenoid malfunction is debris being caught inside, in which case the solenoid needs to be dismantled and cleaned.

Service kits including replacement diaphragms are available. (See Spare Parts section following.)

CLEANING

Enware Product should be cleaned with a soft damp cloth using only mild liquid detergent or soap and water. Do not use cleaning agents containing a corrosive acid, scouring agent or solvent chemicals. Do not use cream cleaners, as they are abrasive. Epoxy coated surfaces should only be cleaned with a cloth and clear water or mild detergent. Use of unsuitable cleaning agents may damage the surface. Any damage caused in this way will not be covered by warranty.

SPARE PARTS

Part	Enware Product Code
SOLENOID (316 Stainless Steel 24V DC)	897126
SOLENOID DIAPHRAGM / SERVICE KIT	WMS8301

WARRANTY

Product Warranties for Australia

Effective 1 September 2014

Enware Australia (“we” or “us”) warrants that this product (also referred to as “our goods”) will be free from all defects in materials and workmanship for 12 months* from the date of purchase. Our liability under this warranty is limited at our option to the repair or replacement of the defective product or part, the cost of repair of the defective product or part or the supply of an equivalent product or part, in each case if we are satisfied the loss or damage was due to a defect in the materials or workmanship of the product or part. All products must be installed in accordance with the manufacturer’s instructions, the PCA, and AS/NZS3500 including any other applicable regulatory requirements.

Making a claim

To make a claim under this warranty you must notify us in writing within 7 days of any alleged defect in the product coming to your attention and provide us with proof of your purchase of the product together with a completed Product ServiceRequest form (ENF091), which is available on request from our office or website (see contact details below). All notifications and accompanying forms must be sent to us marked for the attention of the Enware Australia, 9 Endeavour Road, Caringbah NSW 2229. We can also be contacted by telephone (1300 369 273) or by email (info@enware.com.au). Your costs in making a claim under this warranty, including all freight, collection and delivery costs, are to be borne and paid by you. We also reserve the right at our cost to inspect any alleged defect in the product wherever it is located or installed or on our premises.

Exceptions

This warranty does not apply in respect of any damage or loss due to or arising from:

- a) Failure by you or any other person to follow any instructions for use (including instructions and directions relating to the handling, storage, installation, fitting, connection, adjustment or repair of the product) published or provided by us;
- b) Failure by you or any other person responsible for the fitting, installation or other work on the product to follow or conform to applicable laws, standards and codes (including the AS/NZ 3500 set of Standards, all applicable State and Territory Plumbing Codes, the Plumbing Code of Australia and directions and requirements of local and other statutory authorities); or
- c) Any act or circumstance beyond our control including faulty installation or connection, accident, abnormal use, acts of God, damage to buildings, other structures and infrastructure and loss or damage during transit or transportation of the product.

Other conditions

Except as provided or referred to in this document, we accept no other or further liability for any damages or loss (including indirect, consequential or economic loss) and whether arising in contract, tort or otherwise. Any benefits available to you under this warranty are in addition to any non-excludable rights or remedies you may have under applicable legislation, including as a “consumer” under the Australian Consumer Law. To that extent you need to be aware that: *Our goods come with guarantees that cannot be excluded under the Australian Consumer Law. You are entitled to a replacement or refund for a major failure and for compensation for any other reasonably foreseeable loss or damage. You are also entitled to have the goods repaired or replaced if the goods fail to be of acceptable quality and the failure does not amount to a major failure.*

* 1 Year: The Smart Flow WMS is warranted for parts and labour for this period inclusive of system hardware, firmware and software components.

Electronics WC Flushing: 1 Year parts and labour on complete assembly.



ADDRESS: 9 Endeavour Road, Caringbah NSW 2229 Australia

POSTAL ADDRESS: P.O. Box 2545, Taren Point NSW 2229 Australia

PHONE: ☎ 2 8536 4000

1300 369 273 (AUS) WWW.ENWARE.COM.AU INFO@ENWARE.COM.AU

